

EASTSIDE HERITAGE CENTER



Connections for yesterday, today, and tomorrow.

A Tribute to the Eastside

“Words of Wisdom - Voices of the Past”
An Oral History Project

Catalogue Two



CULTURE
KING COUNTY LODGING TAX

FORWARD

Oral History Resource Catalogue (2016 Edition)

Eastside Heritage Center has hundreds of oral histories in our permanent collection, containing hours of history from all around East King County. Both Bellevue Historical Society and Marymoor Museum had active oral history programs, and EHC has continued that trend, adding new interviews to the collection.

Between 1996 and 2003, Eastside Heritage Center (formerly Bellevue Historical Society) was engaged in an oral history project entitled “Words of Wisdom – Voices of the Past.” As a part of that project, Eastside Heritage Center produced the first Oral History Resource Catalogue. The Catalogue is a reference guide for researchers and staff. It provides a brief introduction to each of the interviews collected during “Words of Wisdom.” The entries contain basic information about the interview date, length, recording format and participants, as well as a brief biography of the narrator, and a list of the topics discussed. Our second catalogue is a continuation of this project, and now includes some interviews collected prior to 1996.

The oral history collection at the Eastside Heritage Center is constantly expanding, and the Catalogue will grow as more interviews are collected and as older interviews are transcribed.

Special thanks to our narrators, interviewers, transcribers and all those who contributed their memories of the Eastside. We are indebted to 4Culture for funding this project.

Eastside Heritage Center Oral History Committee

Table of Contents

Forward and Acknowledgments	pg. 2
Narrators	
Richard Bennett, with Helen Bennett Johnson	pg. 4
Nellie Hansen Bolstad	pg. 7
Bill Brant	pg. 9
Michael Burrows	pg. 11
Anna Clark Fortescue	pg. 13
Nan Campbell	pg. 15
Margaret and Jo Downey	pg. 17
Dewear Forgue	pg. 20
Don Funk	pg. 22
Jo Godsey	pg. 24
Fred Herman	pg. 26
Freda Huber	pg. 28
Phyllis Knick	pg. 30
Lucile McDonald	pg. 32
Fred Reil	pg. 34
Bea Gates Richardson	pg. 36
Christina Siepman Groth	pg. 38
Rex Swan	pg. 40
Ralph Taylor	pg. 42
Irene Brown Westby	pg. 45
Donald Wilson	pg. 47
Rosalie Whyel	pg. 49
Timeline of Bellevue	pg. 51
Photo Sources	pg. 61

Narrator: Richard Bennett (Helen Bennett Johnson)

Interviewer: Kathryn Martin, Lilly Mae Anderson, and Lucile McDonald

Year: 1996

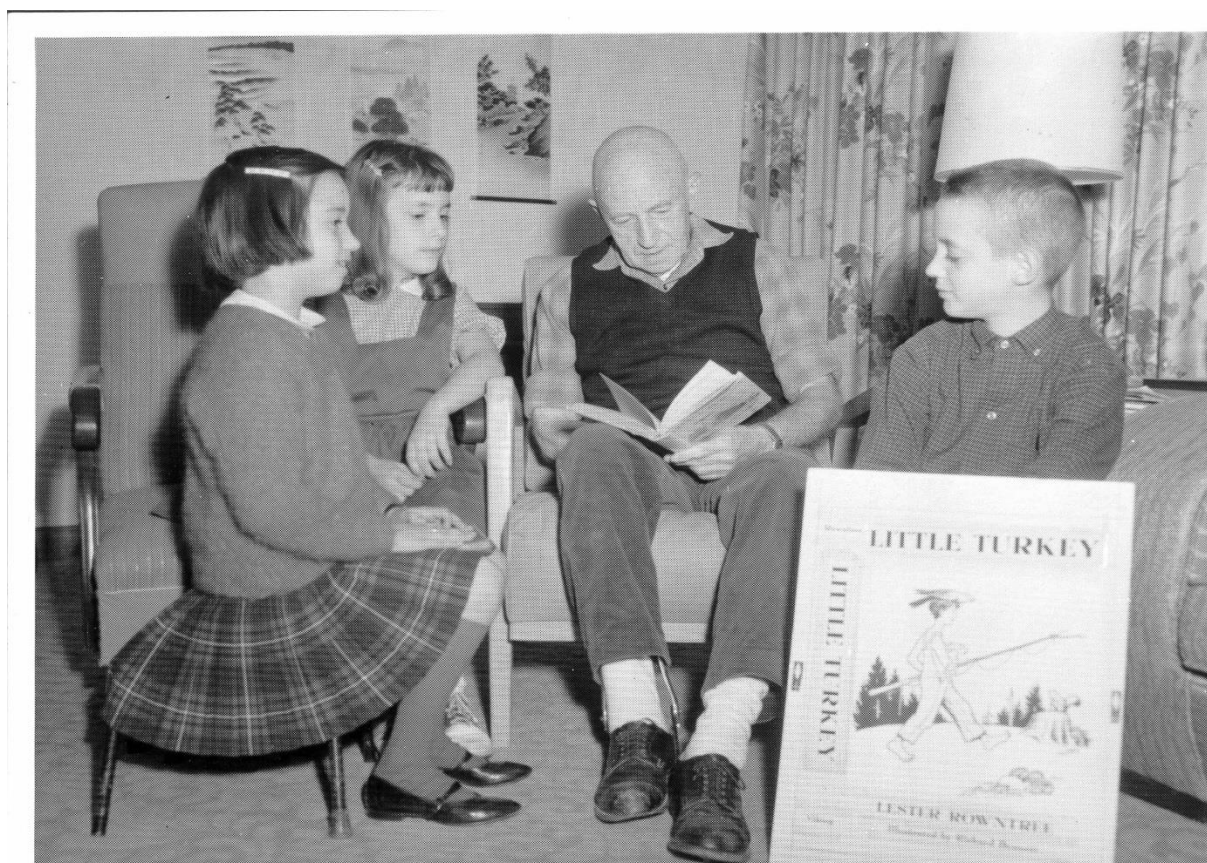
Format: Cassette Tapes, Digitized

Transcribed: Yes

About the Narrator:

Richard Bennett was born in Ireland and moved to the United States when he was four years old. He completed his studies in Washington and became a teacher at Redmond High School. Later, he wrote and illustrated many books, including children books. He won great acclaim for several of his books, including his most acclaimed book, *Shawneen and the Gander*, which is an adaption of an Irish folklore. In 1962, he became ill with uremic poisoning and returned to New York City to resume work. Later, one of the new schools in the Lake Washington School District was named in his honor. Richard Bennett passed away in 1971. This interview was completed by his sister Helen Bennett Johnson.

Image:



Richard Bennett at Bennett Elementary School, 1964

Richard Bennett Topics Discussed:

Unlabeled Tape (Richard Bennett):

- Immigration from Ireland
- Owning a grocery store
- Going to school
- The Highland School
- First automobiles
- Road development
- Old Life Magazine
- Teaching at Redmond High School
- Bellevue-Redmond Road
- Writing career
- Traveling
- Illness- Uremic Poisoning
- Richard Bennett School

Tape 19:

- Highland Community Clubhouse
- School District
- Horse Riding
- Celebrating Christmas
- Going to school
- Ferry boat
- Shopping at Kirkland, Bellevue, and Seattle
- Dairy
- Automobiles
- Swimming in Lake Sammamish
- Railroad
- City Park
- School activities
- Going to church

Tape 20:

- Buying Sloggy homestead
- House Fire

- Illness as a child
- Lumber yard
- Ferry Rides
- Shopping in Bellevue
- Chores as child
- Family

Narrator: Nellie Hansen Bolstad

Interviewer: None

Year: 1982

Format: Cassette Tape, Digitized

Transcribed: Yes

About the Narrator:

Nellie Bolstad's parents were married in Iowa and settle in Seattle in 1903. She was born in 1904 and her family moved to Avondale in 1912. Her family ran an 81 acre dairy farm that sold milk; they also grew crops such as beets and carrots and had other livestock. She grew up on the farm, helping with the chores and went to school in both Redmond and Avondale. In 1916, her family moved to another farm, the land that they owned is now a golf course between 140th and 148th.

Image:



School photo, 1919, Nellie Bolstad is in the second row

Nellie Bolstad Topics discussed:

- Seattle
- Avondale
- Living on the dairy farm
- Indians
- Influenza epidemic
- Childhood
- Market
- Going to school
- Anderson park
- Hunting
- Siler's Mill
- First automobiles
- Prohibition

Narrator: Bill Brant

Interviewer: Unknown

Year: 1994

Format: Cassette Tape

Transcribed: No

About the Narrator:

Bill Brant was born in Seattle, 1915, to early northwest pioneers Edward and Lucy Brant. He attended the University Of Washington School Of Architecture. He married Beverly Door in 1938 before moving to Sana Monica to work with the first atomic bomb project. He later did store design while studying photography. He and his wife opened Brant Photographer, Inc. in Bellevue Square. He operated the store for 30 years, taking photos for portraits, commercial, aerial, magazines, and text books; he took the school photos for Bellevue High School for many years. He retired with his wife to San Juan Islands. Bill Brant passed away November 26, 2006.

Image:



Bill Brant

Bill Brant Topics discussed:

- Childhood
- Mercer Island (Grandparents house)
- Medina
- Madison Park
- Strawberry Festival
- Fortuna Park
- Bellevue High School
- Arts and Crafts Fair
- Photography
- First job
- Wedding
- Churches
- University District
- Running the studio

Narrator: Michael Burrows (Meta Burrows)

Interviewer: Bellevue Historical Society Monthly Program

Year: 1991

Format: Cassette Tape

Transcribed: Yes

About the Narrator:

The Jacobson family first came to Washington in 1883, arriving in Naches, Yakima Valley. Meta Jacobson was born in 1909 and they moved to Yakima in 1921. She studied at Pullman in 1936 as an English major and then transferred to the University of Washington. After getting a job at Halverson's Drugstore, she changed her major and got her Master's degree in Pharmacy, graduating in 1934. After graduating, she opened Meta's Drug Store and she started investing in the drugstore. She married Don Burrows in 1937 and Michael Burrows was born in 1940. She was involved in many community organizations such as the Washington State Pharmaceutical Association, the Seattle King County Druggist's Association, and the Chamber of Commerce. When Meta's Drug Store closed in 1976, it was the oldest continuous operating business in Bellevue. Meta Burrows passed away in 1996 at the age of 86.

Image:



Michael Burrows with his mother, Meta Burrows

Michael Burrows Topics Discussed:

- School
- Pullman
- University of Washington
- Lakeside Drugstore
 - Opening drugstore
 - Running the drugstore
- Halverson's Drugstore
- Japanese Community

Narrator: Anna Clark Fortescue

Interviewer: Kathryn Martin, Lucile McDonald, Lilly Mae Anderson

Year: 1978

Format: Cassette Tapes, Digitized

Transcribed: Yes

About the Narrator:

Anna Clark Fortescue was born in 1888 in Jamestown North Dakota. She moved to Lake Sammamish when she was in high school, with her parents and sisters. Her family bought a 60 acre property where her father built a log house. She completed her education in Seattle at Broadway High school. She received her teaching certificate at a Normal School in Seattle, and taught at the Inglewood School for several years. She met Mr. Fortescue during World War II and they married in 1919 and moved to Rose Hill Village in Kirkland. Her husband worked as a mail carrier and then as the secretary of state. She was a member of the Kirkland Congressional Church and the American Legion Auxiliary. Anna Clark Fortescue passed away in 1985.

Image



Inglewood Junior High School

Anna Clark Fortescue Topics Discussed:

- Living in Kirkland, Juanita, and Seattle
- Father's job
- Building their own house
- Going to school at Broadway in Seattle
- Traveling from Seattle to Lake Sammamish
- Ferry rides
- Getting groceries
- Working at Inglewood school
- Taking classes at the University
- Enumclaw
- Meeting her husband
- Moving to Rose Hill
- Mail Services

Narrator: Nan Campbell
Interviewer: Marsha King
Year: 2009
Format: Cassette Tape, Digitized
Transcribed: Yes

About the Narrator:

Nan Campbell was born in Tacoma, Washington in 1926. Nan Campbell served on Bellevue's City council from 1981 to 1989 and in 1987, she was elected as Bellevue's first woman mayor. She grew up in Seattle and graduated from the University of Washington with a degree in general studies. She married Bruce Campbell in 1949 and raised three children. Campbell was involved in several community services such as the local Girl Scout, the League of Women Voters, and the Lake Sammamish Community club. She went back to the university to study journalism and ended up majoring in psychology, business, and general studies-personnel. After participating in the movement for Bellevue's new drainage utility and helping develop Crossroads into a community center, she ran for city council. She played a large role in the development of Crossroad's park as well protecting the endangered salmon, and improving Bellevue's Human Services department. She passed away in 2013 at the age of 87.

Image:



Nan Campbell

Nan Campbell Topics Discussed:

- Central business district
- Parents
- Running for city council
- Harborview Hospital
- Totem Girl Scouts
- Moving to Lake Sammamish
- Gender Roles
- Lake Sammamish Community Club
- League of Women Voters
- Drainage Utility
- Crossroads
- Human Services

Narrator: Margaret Downey & Jo Downey Burke (Patrick Downey)

Interviewer: None

Year: 1996

Format: Cassette Tape

Transcribed: Yes

About the Narrator:

Patrick Downey was born in 1843, when he was 17; he left Ireland with the hopes of mining gold in the United States. He lived in New York with his first wife until she died from tuberculosis in 1877. He lived in San Francisco, Nevada, Arizona, Colorado, and Idaho before he settled in Washington Territory. In 1882, he purchased 160 acres in Bellevue, becoming the first known settler in Clyde Hill; this property would eventually be known as Vuecrest after it was sold post World War II. He started a home orchard that included strawberry, apples, and plum, as well as a dairy farm. In 1892, he married Victoria, and they had thirteen children. Downey was an important figure in the development of Bellevue. He provided funds to build the Main Street School, held the first Sacred Heart Catholic Church service in his home, and leased land to Japanese Immigrants. Patrick Downey passed away in 1924. This interview was completed by his daughters Margaret Downey & Jo Downey Burke.

Image:



The Patrick Downey family, 1921

*People identified - Back row: Alice Downey Carlson, Peter, Frank, Michael.
Middle row: Catherine, Ann, Bridget Downey Loftus, Agnes, Elizabeth, Rose.
Front row: Margaret, Victoria, Patrick, Josephine, Martha.*

Margaret and Jo Downey Topics Discussed:

- Rosewood Farm
- Moving from Ireland to America for gold
- New York
- Wife Mary gets Tuberculosis and dies with 2nd Child
- Coming to Seattle
- Built log cabin opposite of Sacred Heart Church
- Strawberry/apple fields
- Naming of Bellevue
- Making gift to King Country
- Downey Street
- Going to school in Seattle

- What the children did in the summers
- Holiday Celebration, Fourth of July, Christmas
- Bellevue Strawberry Festivals
- How to get water
- Japanese neighbors

Narrator: Dwenar Forgue

Interviewer: Ralph Taylor and Kathryn Martin

Year: 1978

Format: Cassette Tape

Transcribed: Yes

About the Narrator:

Dwenar Forgue was born in July 17, 1898 at Monohon, Lake Sammamish. She was adopted by the Snoqualmie Tribe Chief Jerry Kanim. She was the oldest member of the tribe at the time of the interview. She lived in Duvall and married John Joseph Forgue Sr. in 1916 when she was eighteen and had ten children who attended school in Redmond. She was a princess of the Snoqualmie Tribe and her grandmother, Mary Louie passed onto her, many ancient Native American remedies. Her doors were always opened to people in need and she was known as a renowned hostess. Being an elder of the Snoqualmie Tribe, she was a valuable resource in the Snoqualmie Tribal Oral History Project. Dwenar Forgue passed away in 1984.

Image:



Dwenar Forgue

Dwenar Forgue Topics discussed:

- Snoqualmie Tribe
- Muckleshoot Tribe
- Yakima Tribe
- Yakima Migration
- Treaty
- Mary Louie
- Hop picking
- Traditional medicine
- Wartime Songs
- Indian Princess
- Monohon
- Fall City
- Snoqualmie Falls
- Snoqualmie Boat
- Religion

Narrator: Don Funk
Interviewer: Ralph
Year: 1967
Format: Cassette Tape
Transcribed: Yes

About the Narrator:

Don Funk first came to Cherry Valley in 1890 when it was still very timbered with few small farms and not many roads. He was a member of the Grange for over 60 years. The Grange, which was a fraternal organization established in 1910 for the farmers in the area. The Grange contributed to many community services and they were influential politically as well as in the religious community. There was only a two room school with about 50 children when Funk was on the board of directors of the school. In 1910, a new school was built with funding from the Grange.

Image



Snoqualmie River Ferry, near Cherry Valley, c. 1905

Don Funk Topics discussed:

- Cherry Valley
- School system
- Education
- Transportation
- Grange
- Pomono Grange
- Rural delivery
- Entertainment
- Insurance

Narrator: Jo Godsey

Interviewer: Lucile McDonald

Year: 1978

Format: Cassette Tape

Transcribed: Yes

About the Narrator:

Jo and James Godsey were married and together they ran the Godsey feed store in the Midlakes area. The Godsey's store was first started when James and Clell persuaded their father to buy the store. L.D. Godsey & Sons Merchandise was one the most well-known stores in the area and was trusted by the local farmers. The store opened in 1909 and was run by the Godsey brothers. They delivered by wagon and did catalogue order.

Image:



Jim (James) Godsey in front of Midlakes Store 116th Ave. N.E./N.E. 8th St., c. 1914

Jo Godsey Topics Discussed:

- Godsey store
- World War I
- Railroad
- Beaux Arts
- Grocery Shopping
- Midlakes
- Kardong family
- School
- Wildwood
- Fortuna
- Enatai
- Water System
- Robinswood Park

Narrator: Fred Herman

Interviewer: Betty Sellers and Steve Cohn

Year: 1979

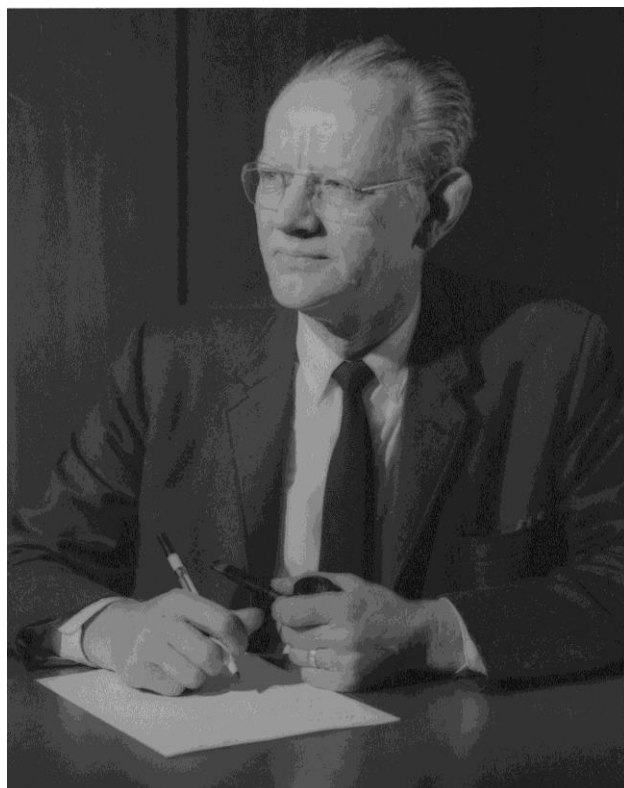
Format: Cassette Tape

Transcribed: No

About the Narrator:

Fred Herman was born in Seattle 1910. Fred Herman was Bellevue's first city planner. He worked as the city planner from 1953 to 1975. Herman graduated from the University Of Washington College Of Architecture in 1936. After he graduated he served in the U.S. army, he later became the planning director for Bellevue. Herman was involved in the planning of downtown. He was later appointed City Director of Long-Range Planning in 1971. His visions for Downton included commercial development, but also as a pedestrian friendly place where people could go to for entertainment and dining. Herman was a leader in the shaping and development of Bellevue. Fred Herman passed away in 1997.

Image:



Fred Herman, Bellevue's first city planner

Fred Herman Topics Discussed:

- The Great Depression
- Finding Employment at lumber yard
- Housing
- Joining the army
- Construction of road, bridges,
- Two day pass
- World War II
- France, Belgium, Germany, Columbia
- Going to college
- University of Washington
- La Push
- Skiing
- Trip to Mexico
- City Planning Committee
 - Loans
- Police department
- Zoning
- Bellevue Square
- Midlakes
- Bridle Trails
- Industrial District
- Business District
- Housing

Narrator: Freda Huber

Interviewer: Helen Bennett Johnston

Year: 1979

Format: Cassette Tape, Digitized

Transcribed: Yes

About the Narrator:

Freda Huber was born in 1906 in the town of Three Lakes, WI. Her father and mother emigrated from Switzerland to Wisconsin. Around 1910, her family moved to Monohon where her mother ran a hotel and her father worked in a lumber mill. She talks about her childhood and Monohon and reflects on her experience living at Lake Sammamish.

Image:



Freda Huber seated on running board, c. 1910 in Monohon

Freda Huber Topics Discussed:

- Monohon
- Issaquah
- Lake Sammamish.
- Transportation
- Lumber Mills
- Railroad to Redmond
- Community programs
- Childhood Recreation
- Three Lakes
- School
- West Seattle
- Monohon Canoe Company
- Strawberries

Narrator: Phyllis Knick

Interviewer: Kathryn Martin, Lucile McDonald

Year: 1978

Format: Cassette Tape, Digitized

Transcribed: Yes

About the Narrator:

Phyllis Knick's great grandfather was Calvin L. Smith who came to Seattle from Ohio in 1890 after his wife died. He lived in Redmond, Fall City, and Port Blakely before settling in Clyde Hill. Smith had one daughter, Bertha Smith, who went to school in Canada and then took a teaching job as Mount Si. Bertha Smith met her husband James Stryker in Happy Valley, and then moved to Redmond. Knick's mother was Gertrude Plummer who was Calvin Smith's granddaughter. They lived in the Moorings. Knick started first grade in 1921 at the old Main Street School in Bellevue.

Image:



Phyllis Knick, with the Gordon siblings at the Clyde Beach dock, 1908

Phyllis Knick Topics discussed:

- Seattle fire
- Calvin L. Smith
- Clyde Hill
- Maple Valley
- Happy Valley
- The *Dix* and *Jeanie* ferries
- Moorings
- Levinson
- Old Main Street School
- Mercer Island
- Meydenbauer Beach
- Medina
- Henning family
- Sherman Compass Factory

Narrator: Lucile Saunders McDonald

Interviewer: Vivian Elridge

Year: Late 1980's

Format: Cassette Tape, Digitized

Transcribed: Yes

About the Narrator:

Lucile Saunders McDonald was born in Portland, Oregon in 1898. She attended the University of Oregon from 1915 to 1917 before marrying Harold D. McDonald in 1922 and settling in Bellevue. In the early 1940's, she started working at the *Seattle Times*. She previously worked for Mary Margaret McBride, who had a popular radio show in New York. She worked at the *Seattle Times* as a copy reader in the feature department. She worked with editing the features in the Sunday Magazine. She wrote several pieces on the *Pacific Northwest* and authored several children's books. She retired from the *Seattle Times* in 1955 and went on to writing for the *Journal American*. She wrote two books on the Eastside, *The Lake Washington Story* in 1979, and *Bellevue: Its First 100 Years* in 1984. Lucile McDonald passed away in 1992 at the age of 93, and was regarded as one of the premier Eastside historians.

Image:



Lucile McDonald at writing desk, circa 1972

Lucile McDonald Topics Discussed

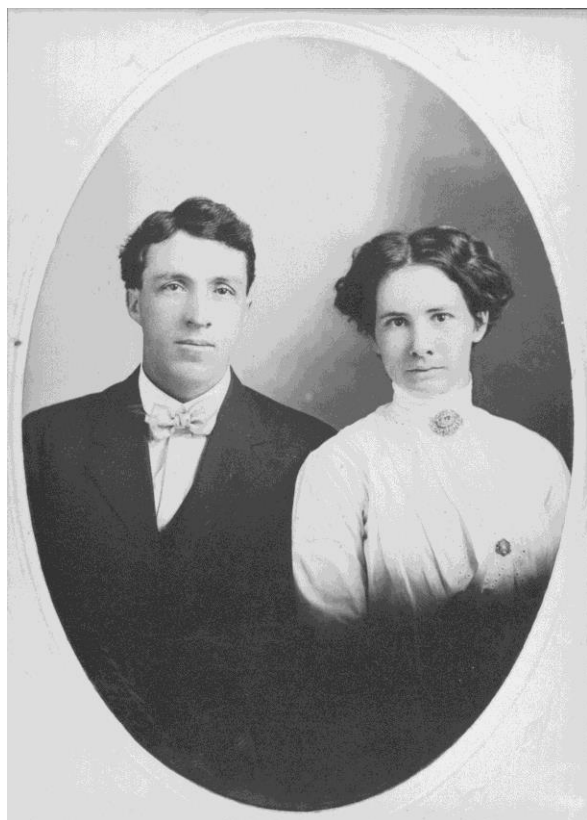
- *Seattle Times*
- *The Sunday magazine*
- *Pacific Magazine*
- *Washington's Yesterdays*
- *Search for the Northwest Passage*
- *Mystery of the Longhouse*
- *The Courting of Anne-Mariah*
- *Sunken Forest*
- *For Glory and the King*
- *The Lake Washington Story*
- King County Historical Organizations
- Writing children books

Narrator: Fred Reil
Interviewer: Helen Bennett Johnson
Year: 1996
Format: Cassette Tape
Transcribed: Yes

About the Narrator:

Frederick August Reil was born in Minnesota in 1875. His parents were immigrants from Germany. Reil also owned the Redmond Trading Company. He came to Redmond around 1909 from Brownston, Minnesota where he worked in a mill and later as a post master before becoming the first mayor of Redmond. After his term, Fred became the Justice of Peace for 30 years, during this time; he also filled the role for Police Judge, Water Superintendent, Street Superintendent, and several other small roles, which he did without payment. He played an important role in the development of Redmond.

Image:



Frederick August Reil with wife Lucy Magdalens Brown, who were married in 1910 in Ballard, Washington

Fred Reil Topics Discussed:

- Redmond
- Mayor
- Prohibition
- Oddfellows Hall
- H.S. Reed
- Redmond Mill
- Seattle National Bank
- Betchtel Drugstore
- Gardening
- Milk Delivery
- Redmond School

Narrator: Bea Gates Richardson

Interviewer: Kathryn Martin, Lucile McDonald

Year: 1978

Format: Cassette Tape

Transcribed: Yes

About the Narrator:

Bea Richardson was the daughter of Samuel Laverne Gates who was the principal at Lester for three years, and then worked at Preston School for six years as a principal and basketball coach. He met Elizabeth Silene in Preston, and they married in Firth, Idaho. Bea was born in Preston on December 23, 1914. Bea moved to Kirkland in 1939 from Saugatese, New York, where she taught for 4 years. After moving to Kirkland, she taught at the Old Rose Hill School for 2 and half years, then at Central school for 26 years. Then she became a special education teacher at Ben Franklin and Thoreau Schools.

Image:



1915, Silene-Gates family portrait in front of home. Bea Gates Richardson is the infant

Bea Gates Richardson Topics Discussed:

- Preston
- Lester
- Mill town
- Swedish Baptist
- Preston Mill Company
- Preston Church
- Lovgren
- Monohon boat company
- North Pacific train company
- Snoqualmie Railroad Society
- Preston fire
- World War I
- Stillwell house
- Edwin home
- Dead Man's Corner
- Indians

Narrator: Christina Siepman Groth

Interviewer: Helen Bennett Johnson and Lilly May Anderson

Year: 1979

Format: Cassette Tape

Transcribed: Yes

About the Narrator:

Christina Groth's parent emigrated from Germany to Indiana and worked as coal miners. Christina was born in 1896 in Indiana. Her family moved to Highland, WA in 1905 to sell fruits and make butter. She and her siblings attended the Highland School. Christina worked in Seattle for a few years before marrying in 1918 to Cris Nelson. They moved to Phantom Lake where they started a dairy farm where they raised cattle to produce milk, cream, and butter. Her family sold the farm in 1946 after carton milk came into the market. After her husband Nelson passed away in 1969, she remarried to Robert Groth. The property she owned is now a part of Lake Hills proper. Christina Groth passed away in 1988 at the age of 92.

Image:



Highland Dairy Farm truck, from Siepman farm

Christina Siepman Groth Topics Discussed:

- Coal mining
- Highland
- Highland school
- Dairy Farm
- Lake Hills
- Phantom Lake
- World War I

Narrator: Rex Swan

Interviewer: Elaine Kandel and John Couch

Year: 1982

Format: Cassette Tape

Cassette Tape: Yes

About the Narrator:

Swan was born in Reinbeck, Iowa in 1895. Both of his parents died before he reached high school and he came to the West in 1921 where he settled in Southbend. He came to Redmond in 1923 when it was still a logging industry. He came to Redmond because he had a position with the Redmond State Bank, which later became the First National Bank of Redmond. He met his wife Frances, in school where they both majored in chemistry and minored in zoology and they married in 1924. He was a member of the local men's club as well as the school board. He was the deputy treasurer from 1927 to 1936 and treasurer from 1936 to 1973 and later president of the old First National Bank of Redmond. Swan was a member of the Redmond Chamber of Commerce from when it was first established. He won the Citizen Award of the Year in 1982.

Image:



Redmond School 1922

Rex Swan Topics Discussed:

- Iowa
- Chamber of Commerce
- Citizen Award of the Year
- First National Bank
- School Board
- Betchtel Drugstore
- Sammamish Valley News
- Redmond School
- Basketball
- Depression

Narrator: Ralph Taylor
Interviewer: Mary Avery
Year: 1982
Format: Cassette Tape
Transcribed: Yes

About the Narrator:

Ralph Taylor was the president of the Duvall town council. Taylor moved from England to King County in 1913, arriving aboard the Royal Mail Ship *Canada*. He talks about life was in England and how they sailed to America. His first impression is how rural and undeveloped Duvall seemed compared to Poole. He compares the differences in England and in the US, in school, culture, language, and environment. His father worked as a painter in England. Duvall in 1913 was a thriving logging and levering center, very different than today He recollects his childhood in Duvall and how he adjusted to life in the US. In 1964, realizing that people might be interested in hearing about the experience of an English family moving to Duvall, he wrote his recollections of Puget Sound in a series of feature stories titled *Duvall Immigrant*. However, before he was able to finish the stories, the newspaper that was publishing his stories, *The Carnavall Reporter*, stopped publication. It wasn't until a year later until the *Snoqualmie Valley Record* continued to print them. The collection of these feature stories can be found in the Washington State University library, and in the collection of Eastside Heritage Center.

Ralph Taylor Image:



Giles Servence and Ralph Taylor (with cane), playing chess.

Ralph Taylor Topics discussed:

- Duvall
- Moody's
- School
- Co-educational Schools
- Cherry Valley
- Mary Avery
- Athletic hall
- Logging
- England
- The Titanic
- Canada
- Life in England
- Goose
- Childhood games and entertainment
 - Hunting and Fishing
 - Country Fairs
- Fourth of July

Ralph Taylor Topics Continued:

- Duvall Immigrant
- Bank Robbery
- Religion
- *The Carnavall Reporter*
- *Snoqualmie Valley Record*

Narrator: Irene Westby Brown
Interviewer: Lilly May Anderson
Year: 1979
Format: Cassette Tape
Transcribed: Yes

About the Narrator:

Irene Brown moved from Wisconsin to Redmond in 1893 with her mother and brother. In Redmond, they joined her father who had arrived before them. Her father was one of the only doctors in Kirkland. They lived on a ranch in Redmond before moving to Seattle. She recollects her experience in Redmond such as the school, the trading company, and dancing at the Odd Fellows Hall. She married Fred Brown and they moved back to Redmond where her husband worked as a stage driver, then as the supervisor for the King County roads. She was involved in the Nokomis Club which started around 1906. She worked with the club to start Redmond's first library.

Image:



Irene & Ada Bell Westby

Irene Westby Brown Topics discussed:

- Brown Family history
- Germany
- School
- Redmond Trading Company
- Dances
- Bike Riding
- First car in Redmond
- Fire Department
- Doctor Keefer
- Redmond Mayors
- King Country roads
- Nokomis Club
- Redmond Library
- Grange Club

Narrator: Donald Wilson

Interviewer: Helen Bennett Johnston and Lilly May Anderson

Year: Unknown

Format: Cassette Tape

Transcribed: Yes

About the Narrator:

Donald Wilson was born in Green Lake (now a part of Seattle). His family would often make trips to his grandmother's house in Yakima, the Goff Place. His father farmed in Yakima, then moved to Medina. Donald's first job was cutting down timber at the saw mill. In 1925, he got a job with an architect. He then became an oiler on the lake ferries. In 1928, he got his U.S. Steamship Inspector license and was an assistant engineer on a small freighter that went up and down the southeast coast of Alaska. During the Depression, he was forced to become an oiler again. In 1935, he was able to get a job as a relief engineer on the Puget Sound ferries and got engaged to Sylvia Sharpe. He married her later that year and they had two boys. In 1936, he took a civil service examination and worked as a sub in the Seattle Post Office. He later became Postmaster before retiring in 1968.

Image:



Early sawmill on Lake Washington

Donald Wilson Topics Discussed:

- Green Lake
- Goff Place
- Yakima
- Homestead
- Bellevue-Redmond Road
- The Depression
- Saw mill
- Oiling
- Ferries
- U.S. Steamship Inspector
- NRA
- Blue Eagle
- Post office
- Rural routes
- Working on the ferry

Narrator: Rosalie Whyel

Interviewer: Unknown

Year: 1993

Format: Cassette Tape

Transcribed: No

About the Narrator:

Rosalie Whyel opened the Rosalie Whyel Museum of Doll Art, which opened in 1992 in downtown Bellevue. The museum featured a permanent collection of 1,200 dolls. The oldest doll in the collection was made 1680. Whyel saw her first antique doll when she was 21 in Juno, Alaska, and then became a serious doll collector. The museum closed in 2012.

Image



Rosalie Whyel in 2012, inside the Rosalie Whyel Museum of Doll Art

Rosalie Whyel Topics Discussed:

- Doll Collecting
- Childhood
- Going to Italy and France
- Doll making (paper doll)
- United Federation Doll Club
- Buru Doll
- World War 1
- Doll Museum
- Architecture of the Museum

Timeline of Bellevue's History

- 1863 Aaron Mercer, along with his wife, Ann Stoven Mercer, is believed to have taken up the earliest land acquisition with 80.5 acres on the west bank of what is now Mercer Slough. Due to conflicting sources, it is difficult to determine when the family moved on to the property, but they did live there in 1869 and 1870.
- 1869 William Meydenbauer homesteaded land on "Meydenbauer Bay."
- 1870 A single election precinct was established on the Eastside. So few persons resided there that one precinct covered all residents from the Black River to the mouth of the Sammamish.
- 1873 Clark Sturtevant claimed land near the south end of "Lake Bellevue" and built a cabin on what is now the corner of NE 8th Street and 116th Avenue. He took advantage of the government grant of 160 acres for Civil War veterans and used the land to support himself by trapping mink and muskrat.
- 1880 Benson Northup settled on the southern part of Yarrow Bay.
- 1882 Patrick Downey homesteaded a 160-acre tract on Clyde Hill and built a log cabin located at the present 100th Avenue NE and NE 12th Street. His property became Vuecrest.

Lucian and Mathew Sharp settled on their homesteads in what became the heart of the Bellevue Central Business District.

Bellevue received its name from the settling pioneers. There are several stories of how the name came to be, including one in which Matt Sharp

suggested “Bellevue” from the French meaning “beautiful view.” Another version is that the name was taken from Bellevue, Illinois, one of the stopping points for travelers to the West.

1883 Albert Burrows built the first school on his land in Killarney on the west side of 108th Avenue SE and just north of SE 25th Street. This small log cabin, built by Burrows and George Miller, had just seven students. The students were taught by Burrows’ daughter, Miss Calanthia Burrows.

1884 Hans Miller built a cabin and barn on the site of the current Robinswood Park. It was still the oldest structure in its original location remaining in Bellevue.

Ferry service began with the vessel *Squak*, captained by J.C. O’Conner.

H.E. Kelsey (for whom Kelsey Creek Park was named) was the teacher of 9 students in a shanty on Mercer Island.

1886 Issac Betchel was named postmaster on July 21, and used his own log cabin as the first post office.

The population of Bellevue was 52.

1888 Daniel Fraser built a log cabin in the Northup area – this cabin was moved to Kelsey Creek Park in 1974.

1889 Washington gained Statehood and Seattle suffered the great fire.

- 1890 Ove and Mary Larsen homesteaded 160 acres near Larsen Lake in Bellevue.
- The first scheduled ferry service began on the *C.C. Calkins* between Bellevue and Leschi Park in Seattle.
- 1892 Bellevue's first bond allowed settlers to construct a two-room schoolhouse at the corner of 100th NE and Main Street. Adelaide Frances Mickels was the first teacher.
- The first doctor, Charles M. Martin, arrived in Bellevue.
- 1896 The First Community Church (later renamed Bellevue Congregational Church) was incorporated on May 4th.
- 1898 Jusaburo Fuji and Mr. Setsuda, the first Japanese pioneers, arrived in Bellevue.
- 1900 The 1900 Census recorded around 400 people in the greater Bellevue area.
- 1904 The Wilburton timber railroad trestle was built.
- 1907 The first telephone line reached Medina.

1908 Beaux Arts Village was founded, patterned around garden villages of England.

1910 Medina Grocery opened its doors to the first customers.

The first Medina School opened as its own district, District #17.

1913 The Bellevue Community Clubhouse opened on a site at 100th Avenue NE and NE 1st Street.

The ferry *Leschi* began making regular 15-minute crossings between Bellevue and Leschi Park in Seattle. This was the first ferry to carry automobiles to the Eastside.

1914 Bellevue's first telephone service began due largely through the efforts of Edward E. Webster who was head of Seattle's Independent Telephone Company and had built a summer home on the Eastside in 1905.

The Japanese Community Association, the Nihonjinkai, was organized.

1916 Lake Washington dropped 8.8 feet after the construction of the Montlake Cut for the Lake Washington Ship Canal. This in turn created new waterfront acreage for Bellevue and uncovered farmland along the Mercer Slough.

The first school bus service began in Bellevue. Sam Sharpe was hired to drive his own Studebaker for the Wilburton students. The first “bus driver” was his 14-year-old son, Andy.

1919 The American Pacific Whaling Fleet, headed by William Schupp, moved its headquarters to Bellevue.

1920 The Bellevue population was estimated at 1,500 residents.

1921 The Washington Alien Land Law Act was enacted on March 2 forbidding Japanese from purchasing land. Due to growing acts of prejudice against the Japanese population, the Japanese Language School closed for four years.

1922 Evening classes in English and homemaking for the Japanese began at Hunts Point.

1925 Bellevue held its first annual Strawberry Festival; approximately 3,000 people attended.

1925 The Japanese Language School reopened.

The Bellevue Women’s Club opened the first public library.

1929 The Fredrick Winters house on Mercer Slough was built.

1930 Bellevue's first High School building opened – the Union “South” High School.

1940 The first floating bridge across Lake Washington opened.

The ferries from Leschi to Mercer Island and Medina stopped service.

1942 Approximately three hundred Japanese-Americans were sent to internment camps on May 30th. The Strawberry Festival was cancelled due to the fact that the Japanese-Americans who cultivated the majority of the strawberry fields were gone.

1944 King County assumed responsibility of the public library system from the Women's club and hired its first paid librarian, Marguerite Groves.

1946 Bellevue Square, developed by Miller Freeman and his son Kemper Freeman, Sr. opened. The first business was the Bel-Vue Theater.

1947 The Bellevue Chamber of Commerce formed.

The first Arts & Crafts fair was organized by Carl Pefley in front of his restaurant, the Crabapple.

1948 The American Pacific Whaling Co. went bankrupt and closed.

1950 The greater Bellevue population was approximately 8,000 people.

The Overlake School District became the Bellevue School District and the high school changed its name to Bellevue Senior High.

1953 Bellevue incorporated as a third-class city with a population of approximately 5,940.

Charles Bovee was elected mayor by Bellevue's first City Council.

1956 Bellevue received "All-American City" status from *Look* magazine.

1959 Bellevue installed its first street light at Main Street and Bellevue Way.

1960 Bellevue's population was 12,800.

1961 L. Joe Miller was hired as city manager.

Crossroads Shopping center opened at NE 8th Street and 156th Avenue.

1963 The second floating bridge opened on Lake Washington – the Albert D. Rosellini Memorial Evergreen Point Floating Bridge.

Bellefields Nature Park was established on 48 acres in Mercer Slough.

- 1965 The Bellevue Fire Department formed.
- 1966 Bellevue Community College opened on January 3rd in portable classrooms at Newport High School.
- 1967 Bellevue's first "skyscraper", the 400 Building, opened at 108th Avenue NE and NE 4th Street.
- R. Joseph Scott established the Bellevue Philharmonic Orchestra.
- 1970 The Bellevue population, due to annexations and new housing developments, reached 61, 196 residents.
- 1972 Medic One began Eastside service.
- 1975 The Bellevue Arts Museum opened.
- 1977 L. Joe Miller resigned as City Manager, and Dick Cushing became acting Manager.
- 1980 The first woman city manager of Bellevue, Andrea Beatty, was appointed.
- Bellevue's population was 73,903.

- 1981 The first phase of the newly expanded Bellevue Square opened.
- 1985 The Bellevue Historical Society was founded.
- 1987 The Strawberry Festival was revived by the Bellevue Historical Society.

Timeline Bibliography

City of Bellevue. *Bellevue Chronicle: 1863-1989*. City of Bellevue, Washington: Information Service Department. 1989.

McDonald, Lucile. *Bellevue: Its First 100 Years*. Bellevue Historical Press: Bellevue, Washington. 2000.

Stein, Alan J. & HistoyLink Staff. *Bellevue Timeline: The Story of Washington's Leading Edge City From Homesteads to High Rises, 1873-2003*. University of Washington Press: Bellevue, Washington. 2004.

Photo Sources

Richard Bennett (Eastside Heritage Center,77.9.7.4)

Nellie Hansen Bolstad (Eastside Heritage Center,L82.023.007)

Bill Brant (Eastside Heritage Center, Reference File)

Michael Burrows (Eastside Heritage Center, L89.052.023)

Anne Clark Fortescue (Eastside Heritage Center, L82.26)

Nan Campbell (Eastside Heritage Center,L89.052.027a)

Jo and Margaret Downey (Eastside Heritage Center, 2000.38.01)

Dwenar Forgue (Eastside Heritage Center, L89.082.027a)

Donald Funk (Eastside Heritage Center, L82.050.052.c)

Jo Godsey (Eastside Heritage Center, 1998.01.02)

Photo Sources cont.

Fred Herman (Eastside Heritage Center, 1991.01.01)

Freda Huber (Eastside Heritage Center, OR/L 79.79.040)

Phyllis Knick (Eastside Heritage Center, OR/L 79.79.196)

Lucile McDonald (Eastside Heritage Center, L93.132.004)

Fred Reil (Eastside Heritage Center, L89.003.001.a)

Bea Gates Richardson (Eastside Heritage Center, L83.017a)

Christina Siepman Groth (Eastside Heritage Center, L90.24.2)

Rex Swan (Eastside Heritage Center, OR/L 79.79.071)

Ralph Taylor (Eastside Heritage Center, 2013.004.039)

Irene Westby Brown (Eastside Heritage Center, L88.031)

Photo Sources cont.

Donald Wilson (Eastside Heritage Center, L96.025.053 from the Richard McDonald Research Collection)

Rosalie Whyel (*Seattle Times*, August 28, 2012, EHC Reference Files)